

# Operation and Maintenance guide

Vertical Sliding Sash Windows

**ECOSlide**<sup>®</sup>  
The No.1 Sash Window Brand

# Window Components



## Travel Restrictors

Provide enhanced security and safety for your vertical sliding sash windows. Used to restrict the opening of the window to just 100mm. Key operated.



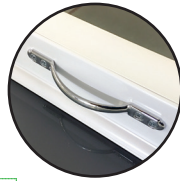
## Sash Locks

Lock both bottom and top sashes firmly in place when the window is fully closed. Key lockable. One Sash Lock is fitted to windows up to 799mm wide. Two are fitted on windows 800mm wide and over.



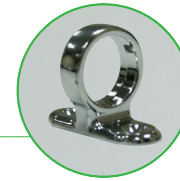
## Security Bar

This specially-designed feature is an integral part of the window cill which significantly increases security, to help prevent potential intruders using tools or excessive force to try and lever open the bottom sliding sash and gain entry.



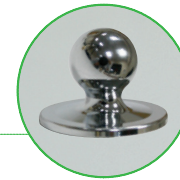
## D Handles

These optional easy-grip handles can be used in place of pole eyes or sash lifts and can be fitted externally on the bottom of the top sash for ease of operation.



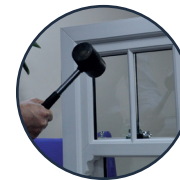
## Pole Eyes

Used for opening and closing the top sash. One Pole Eye is fitted to windows up to 479mm wide. Two are fitted on windows 480mm wide and over.



## Tilt Knobs

Allow inward tilting of the sliding sashes for easy and safe cleaning from inside the home. Two Tilt Knobs are fitted as standard.



## Toughened Glass

Fitted in both top and bottom sashes as standard.



## Sash Lifts

Used for opening and closing the bottom sash. One Sash lift is fitted to windows up to 479mm wide. Two are fitted on windows 480mm wide and over.



Satin Chrome



Chrome



Gold



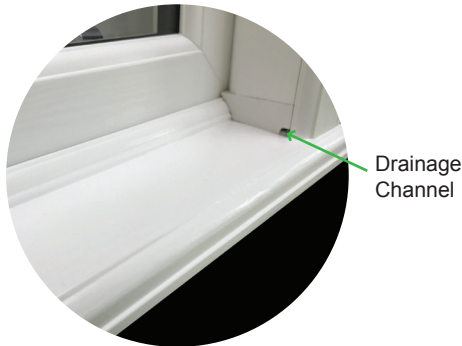
White



Black

# Maintenance

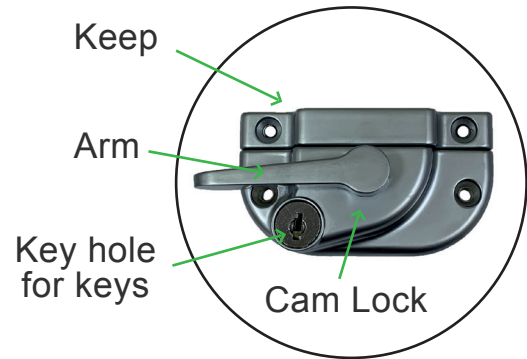
- Carry out routine maintenance on your windows at least twice a year. In areas of high exposure, you may want to do this more frequently.
- All parts of your window that are exposed when closed should be washed down with warm soapy water using a soft cloth, then dried thoroughly.
- Any parts that are exposed when the windows are open, should simply be wiped clean, removing any grime, dirt, insect remains or old lubricant.
- You must avoid any cleaning agents that have ammonia in them or that are abrasive.
- Special attention should be paid to keep drainage channels clear and free from any blockages.





# Locking & Unlocking

The cam lock is used for locking and unlocking your vertical sliding window (see below). please note when unlocking your window you will need to remove the keys from the lock to engage/move the cam lock arm.



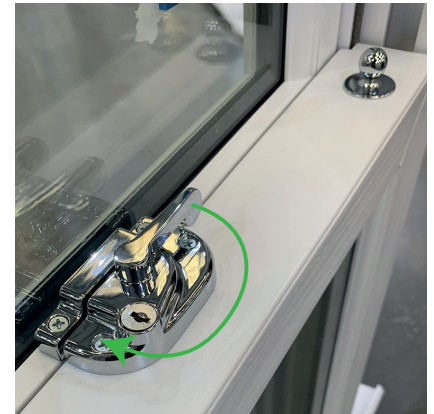
Use key supplied to lock or unlock Cam Lock

Opening



Remove keys when unlocked and rotate arm to unlock window  
(OPEN POSITION)

Closing/Locking



Rotate arm to lock window  
(CLOSED POSITION)  
Insert keys and lock (if required)



**IMPORTANT:** Please ensure that the keep and cam lock are parallel with each other before engaging the arm into the closed position.



# Sliding

**ECOSlide** PVC-U sash windows function like a wooden box sash window with both the top and bottom sashes sliding up and down to suit your ventilation requirements.

Convenient and simple to operate, the two sliding sashes within an outer frame work independently of each other on a balanced load mechanism, designed to hold the sash at any height.



## Ventilation

ECOSlide windows offer improved circulation when both top and bottom sashes are open; when cool air comes in, warm air is pushed out.

**IMPORTANT:** Do not leave your windows in the tilted position for ventilation.







# Tilt & Easy Clean

**ECOSlide** PVC-U sash windows are incredibly low maintenance, requiring only a quick wipe down with a damp cloth to keep them looking as good as new.

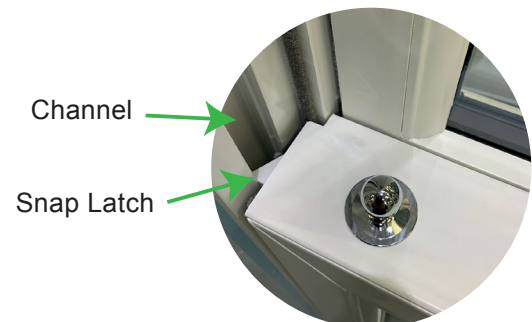
The window sashes feature an inward opening tilt facility to allow easy and safe cleaning of the outside frame and glass from inside your home. This is particularly useful for second storey windows or windows positioned in a hard to reach place, such as above a conservatory.



## Tilting

To tilt windows, unlock cam lock to the open position, slide bottom sash/window up approx 50mm and then push tilt knobs in as shown on image and tilt window towards you (from the inside) to close window push the window to upright position and then push window down.

Please ensure both snap latches are located back into channel (see image below) or you may have issues closing/locking cam lock.





# Travel Restrictors

These provide enhanced security and safety for your vertical sliding sash windows. They restrict the opening of the window to just 100mm.

To engage restrictors you will find a special restrictor key supplied with your window keys. Do not use other items for this, to prevent damage to the cam. Insert restrictor key into the black cam (as shown) and turn in a clockwise direction to make restrictor open out, to disengage restrictor push restrictor back into frame and turn cam anti clockwise using key provided.



**IMPORTANT:** Only use the restrictor key provided to prevent damage to the restrictor cam



Fit key into cam and turn clockwise to open restrictor

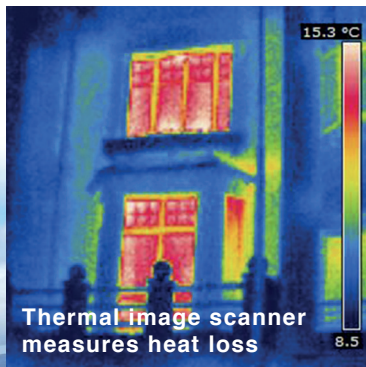


Push restrictor in and turn cam anti clockwise to close/lock restrictor

# Energy Efficiency & Ratings

## Enjoy a warmer, more comfortable home with energy efficient sash windows

Windows are given energy ratings based on their ability to insulate your home. These are displayed on a colour scale ranging from 'A++' to 'E', with 'E' being the least energy efficient and 'A++' the most energy efficient.

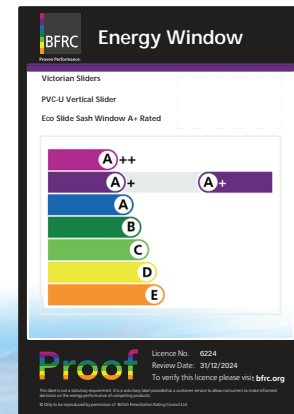


Putting the style back into your home with **ECOSlide** will make your home a warmer and more comfortable place to live, saving on your energy bills year on year.

**ECOSlide** PVC-U sash windows are 'A+' rated as standard.



Scan above QR code to visit our website



E&OE

Please note the information contained within this brochure are subject to change, improvements within specifications are possible in the imminent future. Please check the relevant official websites for up to date information. ECOSlide are not accountable for any errors or misleading information printed within this guide.

E-BR-ISSUE11-04-2024

**ECOSlide**<sup>®</sup>  
The No.1 Sash Window Brand